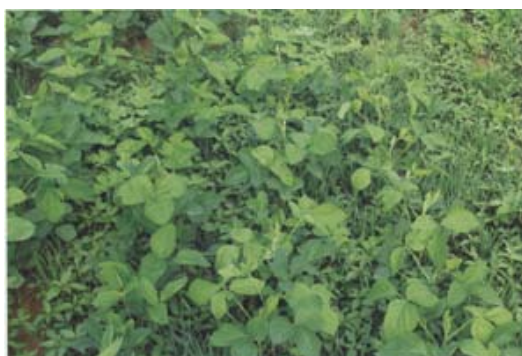




## Metribuzin

Metribuzin is photosynthetic electron transport inhibitor at the photosystem II receptor site, selectivity is due to metabolism (mostly conjugation) within the plant, selective systemic herbicide, absorbed predominantly by the roots, but also by the leaves, with translocation acropetally in the xylem. Pre- and post-emergence control of many grasses and broad-leaved weeds in soya beans, potatoes, tomatoes, sugar cane, alfalfa, asparagus, maize and cereals.



**Action:** \* Selective systemic  
 \*Pre- and post-emergence application  
**CAS No.:** 21087-64-9  
**Technical Grade:** 97% min.  
**Formulations:**  
**Packaging<sup>1</sup>:** \* 25kg drum (TECH.)

Crops	Target	Dose (a.i. g/ha)
Soybean	Annual broad-leaved weeds	345-795

<sup>1</sup>NOTE: Upon request we provide customized packing

Copyright Owner© 2008 **FlagChem**

- Changfenghe Road, Nanjing Chemical Industrial Park, Luhe, Nanjing, China 210047
  - Tel: 86-25-58375015 Fax: 86-25-58375450
- E-mail: [sales@flagchem.com](mailto:sales@flagchem.com) Website: [www.flagchem.com](http://www.flagchem.com)